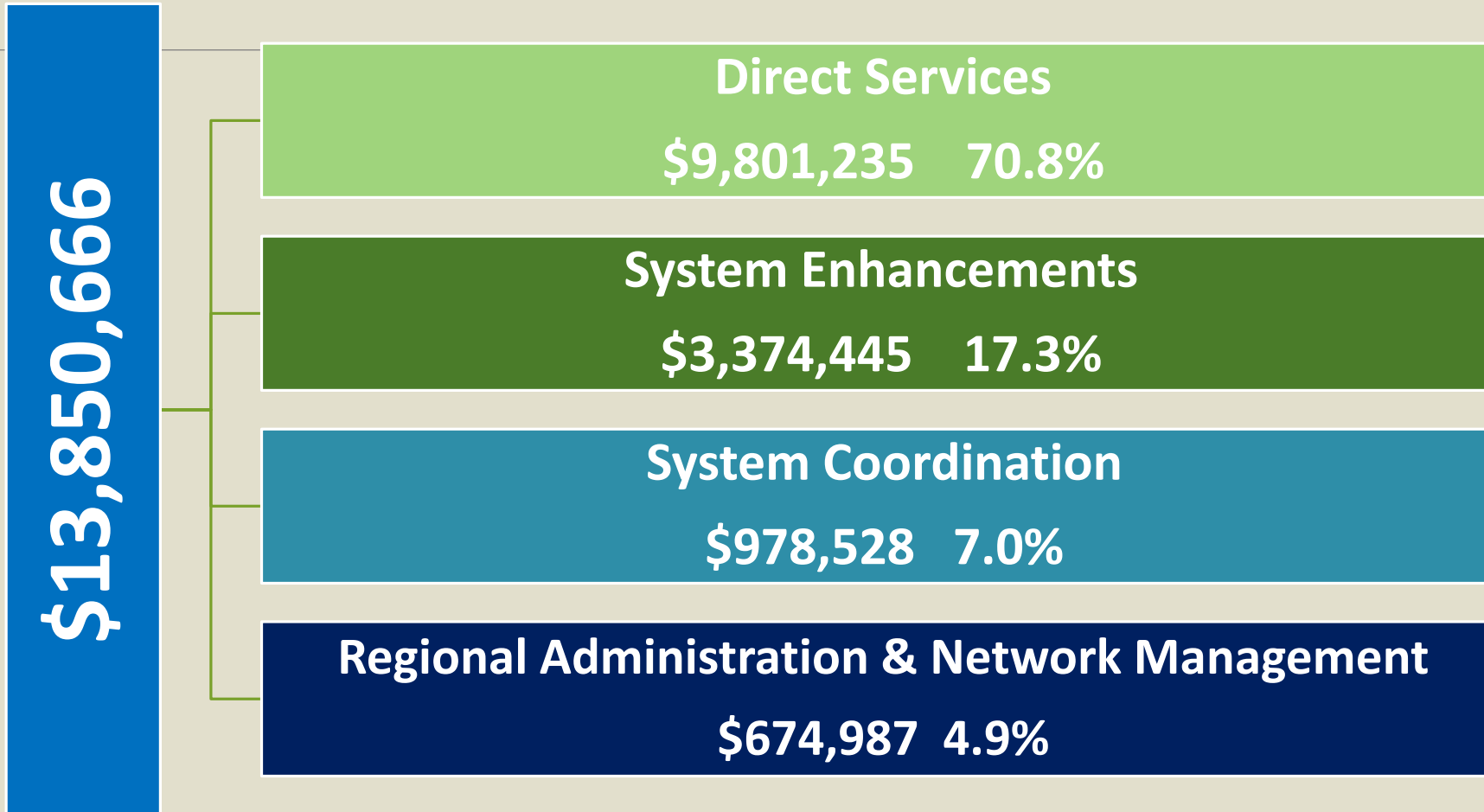




2023 ANNUAL IMPACT REPORT

JULY 1, 2022 - JUNE 30, 2023

FY23 Expenditures



Region 3 Fiscal Management

System planning, resource assessment, and budgeting

Contract development and monitoring

Tracking and reporting of billing and utilization data to make informed financial decisions

Tracking access and performance metrics and standards

Fiscal and programmatic review of network providers

Internal controls

Risk management

Annual independent audits

Network Management & System Coordination

Building on individual, community & system strengths

Region 3 is one of 6 Regional Behavioral Health Authorities

Serves Adams, Blaine, Buffalo, Clay, Custer, Franklin, Furnas, Garfield, Greeley, Hall, Hamilton, Harlan, Howard, Kearney, Loup, Merrick, Nuckolls, Phelps, Sherman, Valley, Webster, and Wheeler.

15 Community-Based Network Providers

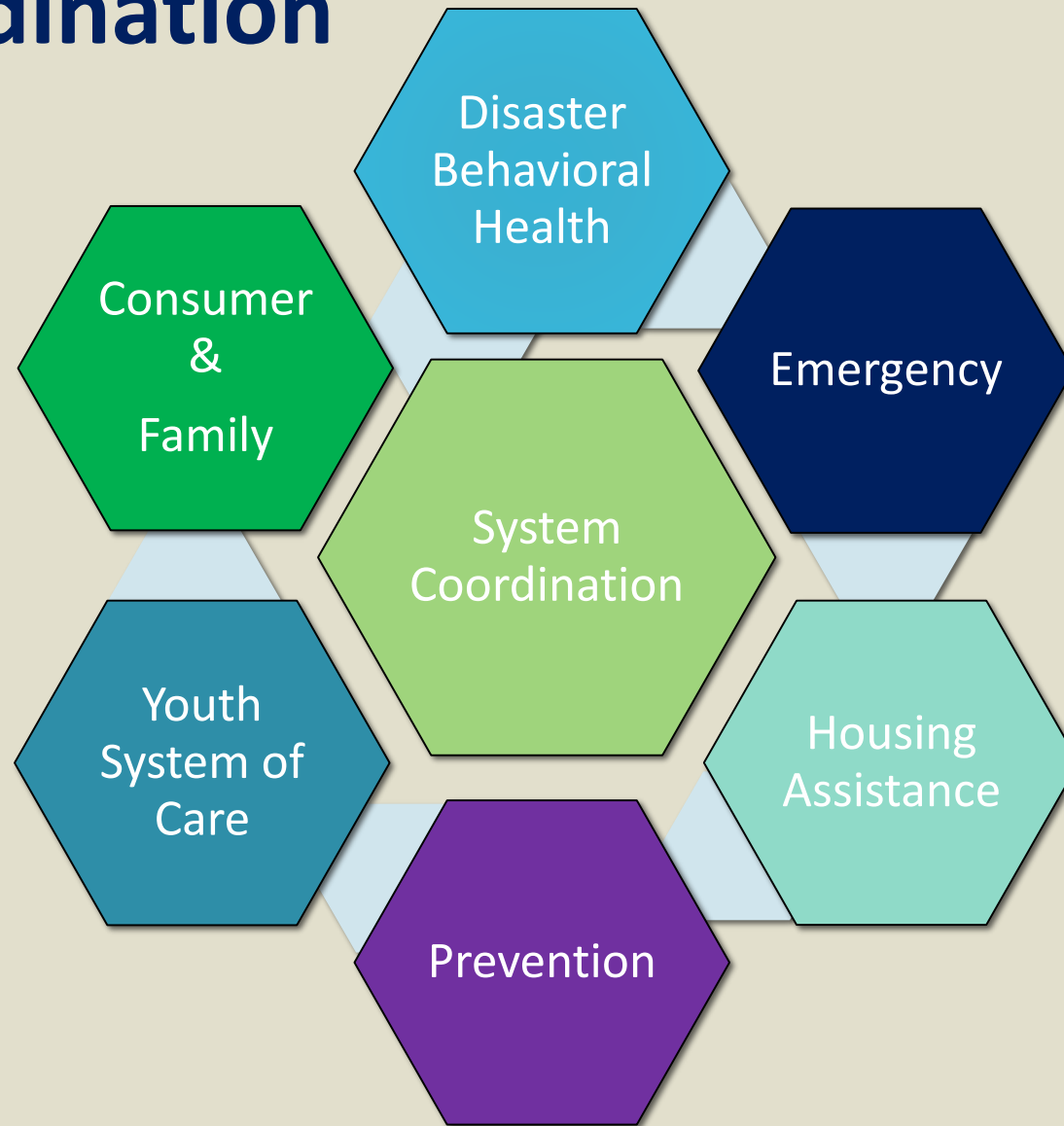
6 Community Coalitions for Prevention Activities



Region 3's nationally accredited programs:

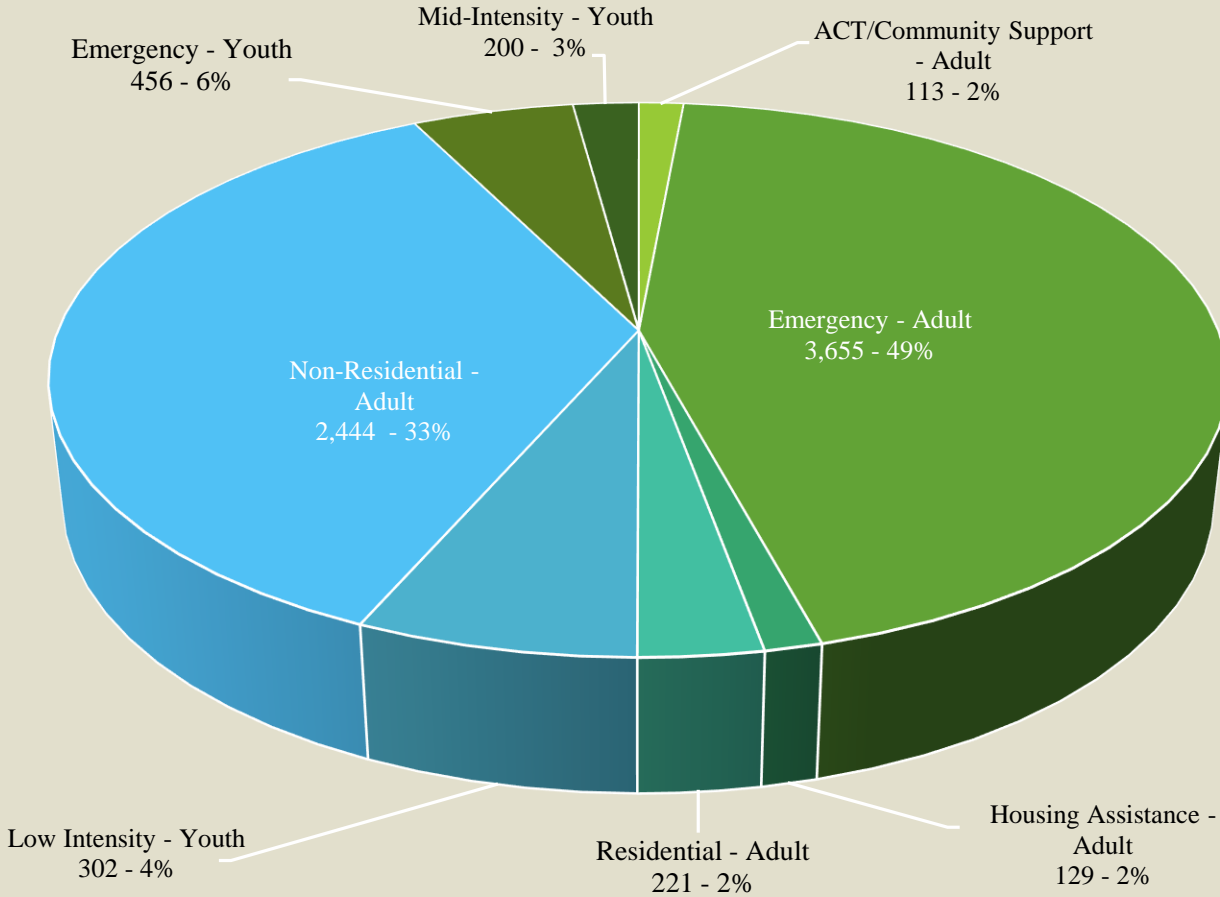
- Professional Partner Program
- Emergency Community Support
- Network

System Coordination

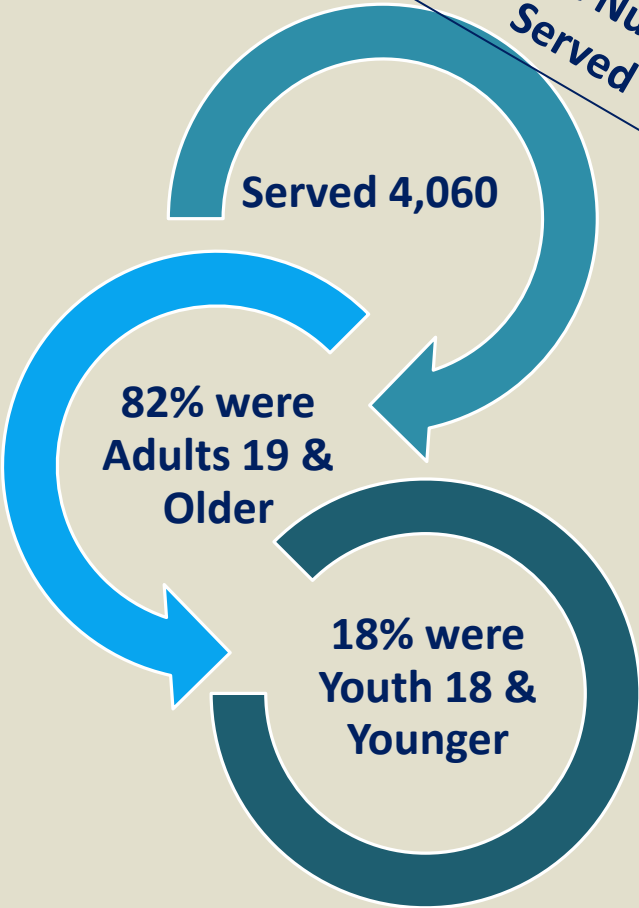


**Duplicated Count
N=7,520**

Individuals Served by Level of Care



**Unique Number
Served**



Prevention System

Prevention Coalitions working to improve the health of Region 3 communities through


- Mental Health Promotion
- Substance Misuse/Use Prevention
- Suicide Prevention

7,330 individuals directly served through Indicated, Selective and Universal Direct Prevention Strategies

\$731,473 expended which is 5% of total expenditures.



Training	# Trained
<i>Mental Health First Aid (MHFA) & Youth Mental Health First Aid (YMHFA)</i>	318
<i>Suicide Prevention</i> Question, Persuade, Refer (QPR) & Clinicians Trained in the Collaborative Assessment in Managing Suicidality (CAMS), Assessing and Managing Suicide Risk (AMSR) & Suicide Postvention	451
<i>Restorative Trauma Informed Care</i> Trauma 101 & Recovery, Healing & Recovery, Compassion Fatigue, Mindfulness, Calmer Classrooms, Trauma 2.0, Helping Adults Cope with Grief, Trauma and Children, Toxic Relationships: Raising Healthy Kids in an Unhealthy World, Rewiring the Anxious Brain, A New Perspective into Mental Health: including Anxiety, Depression and Anger, Building Hope & Resilience Through Trauma Informed Care, Wellness Recovery Action Plan (WRAP), Peer Support Ethics, and LEAP (Listen-Empathize-Agree-Partner)	2,468

 	
Targeted Response to Opioids	
Collected at Drug Take-Back Events	273 pounds
Safe Drug Disposal & Lock Boxes	1,840
School-Aged Youth Receiving Opioid Prevention Education	1,910

Our Community Coalitions

Area Substance & Alcohol Abuse Prevention (ASAAP) (Adams, Clay, Nuckolls, Webster)

Buffalo County Tobacco Free Coalition

County Organization for Prevention & Education (COPE) (Hamilton)

Garfield-Loup-Wheeler (GLW) Children's Council

Grand Island Substance Abuse Prevention Coalition (Hall)

Meth & Addictions Prevention Strategies (MAPS) (Hall, Hamilton, Howard, Merrick)

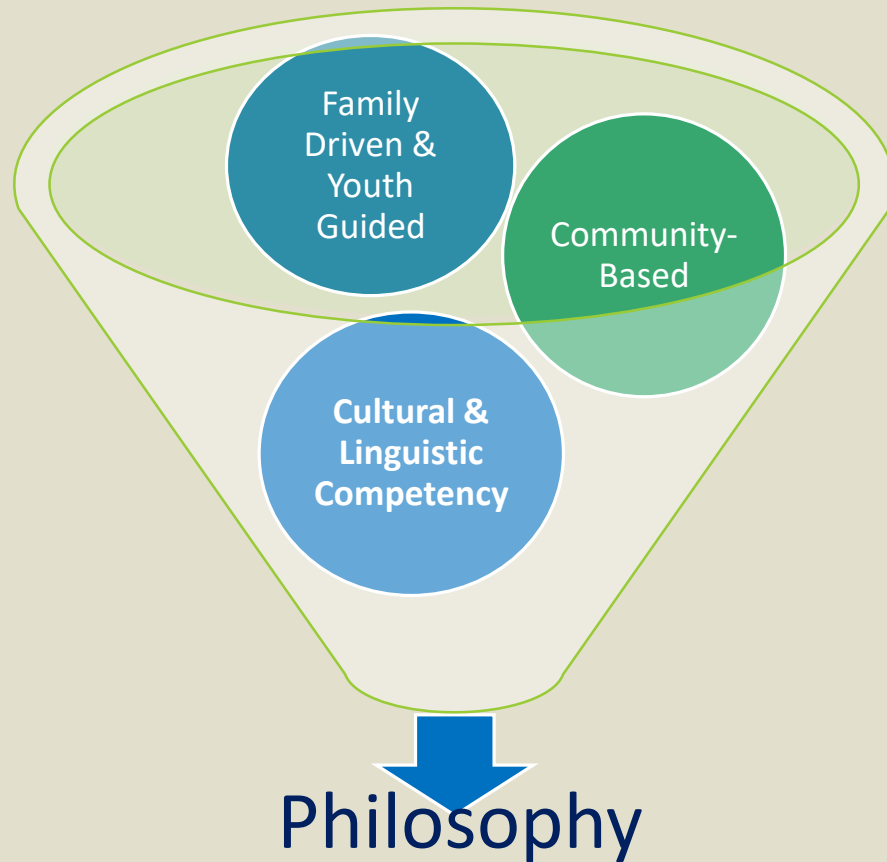
Positive Pressure Community Coalition (Buffalo County Community Partners)

Tobacco Free Hall County

UNK Alcohol Task Force Peer Health Education (University of Nebraska at Kearney)

TA Support & Funded TA Support Only

Youth System of Care



Children's Services by Level of Care

Crisis Services	456	48%
Middle Intensity Services	200	20%
Lower Intensity Services	302	32%
Total	958	100.0%

Participant and Family System Coordination

A mentor is someone who allows you to see the hope inside yourself.

❑ 80 individuals were served in contracted Peer Support services in Region 3.

❑ Peer Support providers include

❑ Families CARE

❑ South Central Behavioral Services

❑ Lutheran Family Services (*Vets4Vets*)



Region 3 Emergency Psych System

Array of Behavioral Health Services available within the Region 3 Emergency System

Acute Inpatient Youth & Adult	Emergency Community Support Youth & Adult	Co-Responder Youth & Adult
Crisis Stabilization (Voluntary)	Emergency Protective Custody (EPC) (18 & Older)	Medication Management Youth & Adult
Crisis Response Youth & Adult	Emergency Psych System Coordination	Urgent Outpatient/Assessment Youth & Adult
Crisis Triage Center Youth & Adult	Medically Supported Detox & Social Detox Adult	24 Hour Crisis Phone Youth & Adult

4,111 individuals engaged with a Crisis Services

456 (11%) of these individuals were age 18 or under. **3,655** (89%) were 19 and older.

Housing Assistance Program

☐ **129** Served

☐ **102** Serious mental illness

☐ **11** Women exiting Therapeutic Community treatment

☐ **12** Transitional age youth

☐ **4** Substance use disorder recovery

☐ **\$9,046** average annual gross income
of an individual receiving Housing Assistance



Region 3 Network

Behavioral Health Specialists

Families CARE

Friendship House

Goodwill Industries of Greater Nebraska

Live Well Counseling Center

Lutheran Family Services

Mary Lanning Healthcare/The Lanning Center

Mid-Plains Center for Behavioral Health Services

Region 3 Network (continued)

Region 3 Behavioral Health Services

Richard Young Behavioral Health

St. Francis Alcohol and Drug Treatment Center

South Central Behavioral Services

The Bridge, Inc.

The Bridge Behavioral Health

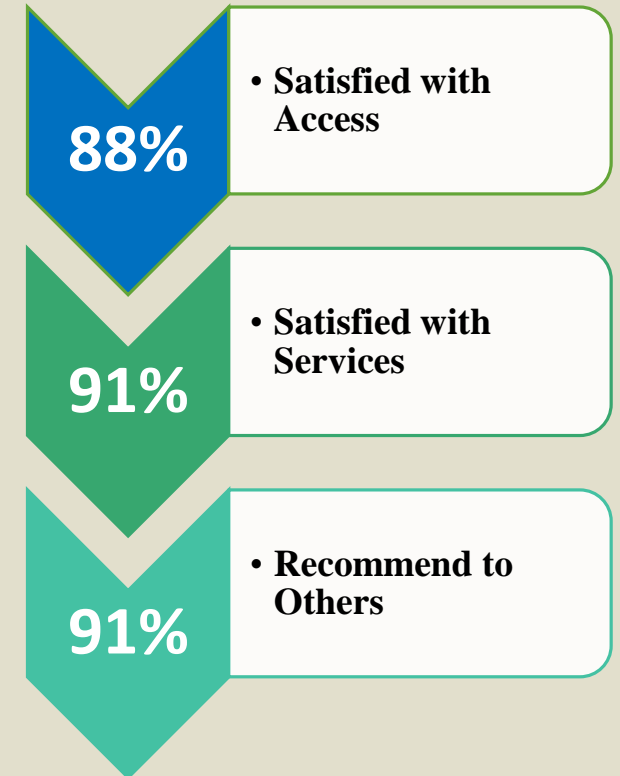
The Lanning Center

The Well (Women's Empowering Life Line)

Region 3 Behavioral Health Services Network

Access and Performance Outcomes

- 100% of individuals discharged from psychiatric hospitalization were offered a medication management appointment within 21 days.
- 97% of veterans participating in the Vets4Vets Program saw an increase in their overall functioning as measured by the DLA-20 Assessment.
- 93% of individuals served by the Co-Responder Program reported an increase in ability to resolve future crisis.
- 92% of individuals served by Supported Housing services were in stable living at the time of discharge.
- 92% of individuals served in Peer Support services achieved or partially achieved their goals.
- 84% of individuals served through the Region 3 Provider Network were in stable living at discharge.
- 79% of individuals meeting priority criteria were offered admission to Short-Term Residential within 30 days of referral.
- The Crisis Stabilization Unit served 1,199 individuals with 99% being diverted from an EPC and 85% diverted from a voluntary hospitalization.



R3 Emergency Community Support

144 individuals served

**Average Age
39.1 years**

**Prior Substance Use
Treatment
43.8%**

**Improvement on
DLA-20 Assessment
82.8%**

- **88.3% individuals achieved or partially achieved their goals**
- **85.5% of intakes completed within 7 days of referral**
- **95.1% reported they were satisfied with the services they received**

Professional Partner Program

163 Youth &
Young Adults
Served

Referral Sources

Human Service Provider 40%
School 27.9%
Family/Caregiver 13.6%

Gender
Males 61.3%
Females 38.7%

Average of
28.7 point
decrease in
functional
impairments.

ANY
QUESTIONS?

THANK
YOU!