

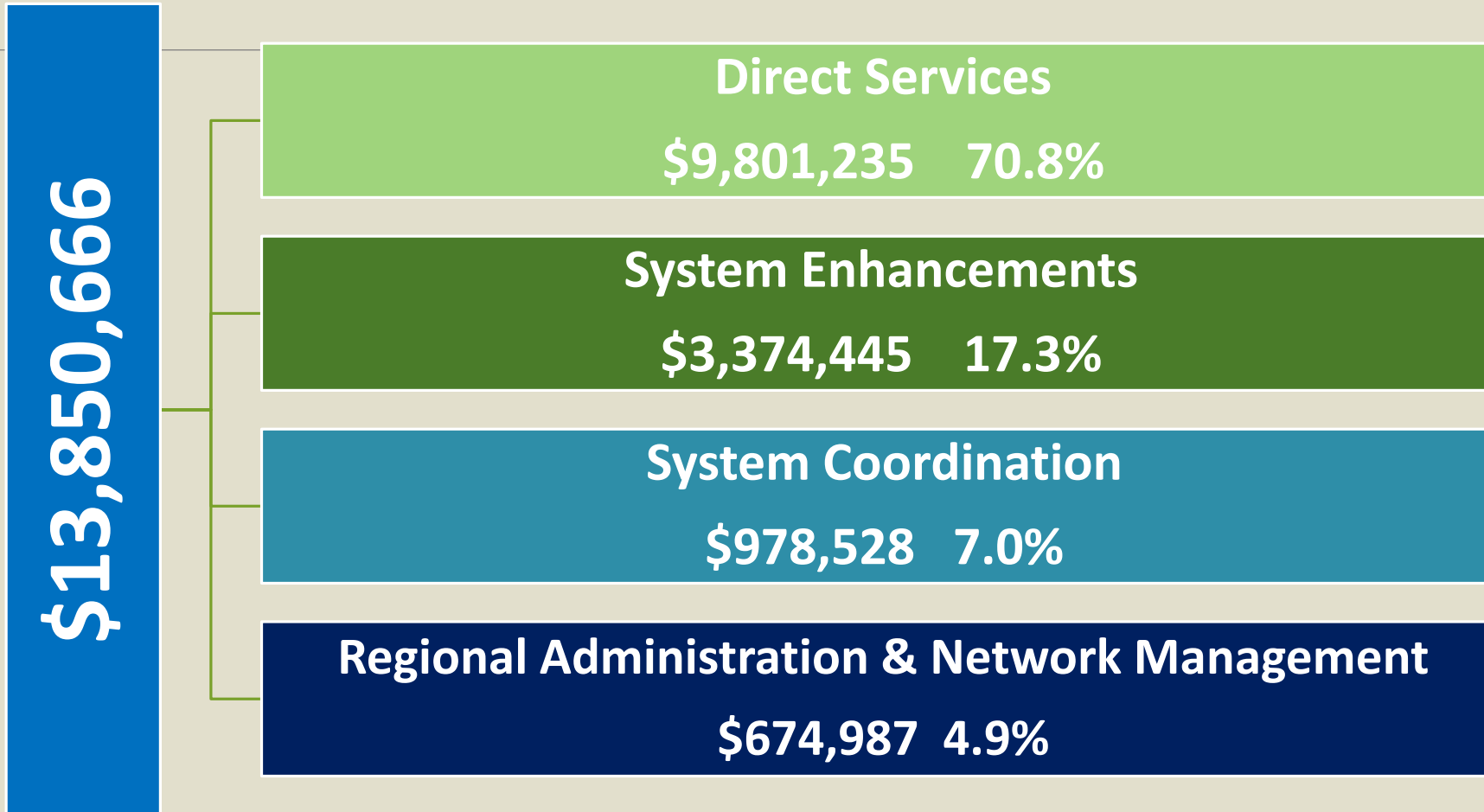


# ***2023 ANNUAL IMPACT REPORT***

---

***JULY 1, 2022 - JUNE 30, 2023***

# FY23 Expenditures



# Region 3 Fiscal Management

---

System planning, resource assessment, and budgeting

Contract development and monitoring

Tracking and reporting of billing and utilization data to make informed financial decisions

Tracking access and performance metrics and standards

Fiscal and programmatic review of network providers

Internal controls

Risk management

Annual independent audits

# Network Management & System Coordination

*Building on individual, community & system strengths*

**Region 3 is one of 6 Regional Behavioral Health Authorities**

---

**Serves Adams, Blaine, Buffalo, Clay, Custer, Franklin, Furnas, Garfield, Greeley, Hall, Hamilton, Harlan, Howard, Kearney, Loup, Merrick, Nuckolls, Phelps, Sherman, Valley, Webster, and Wheeler.**

**15 Community-Based Network Providers**

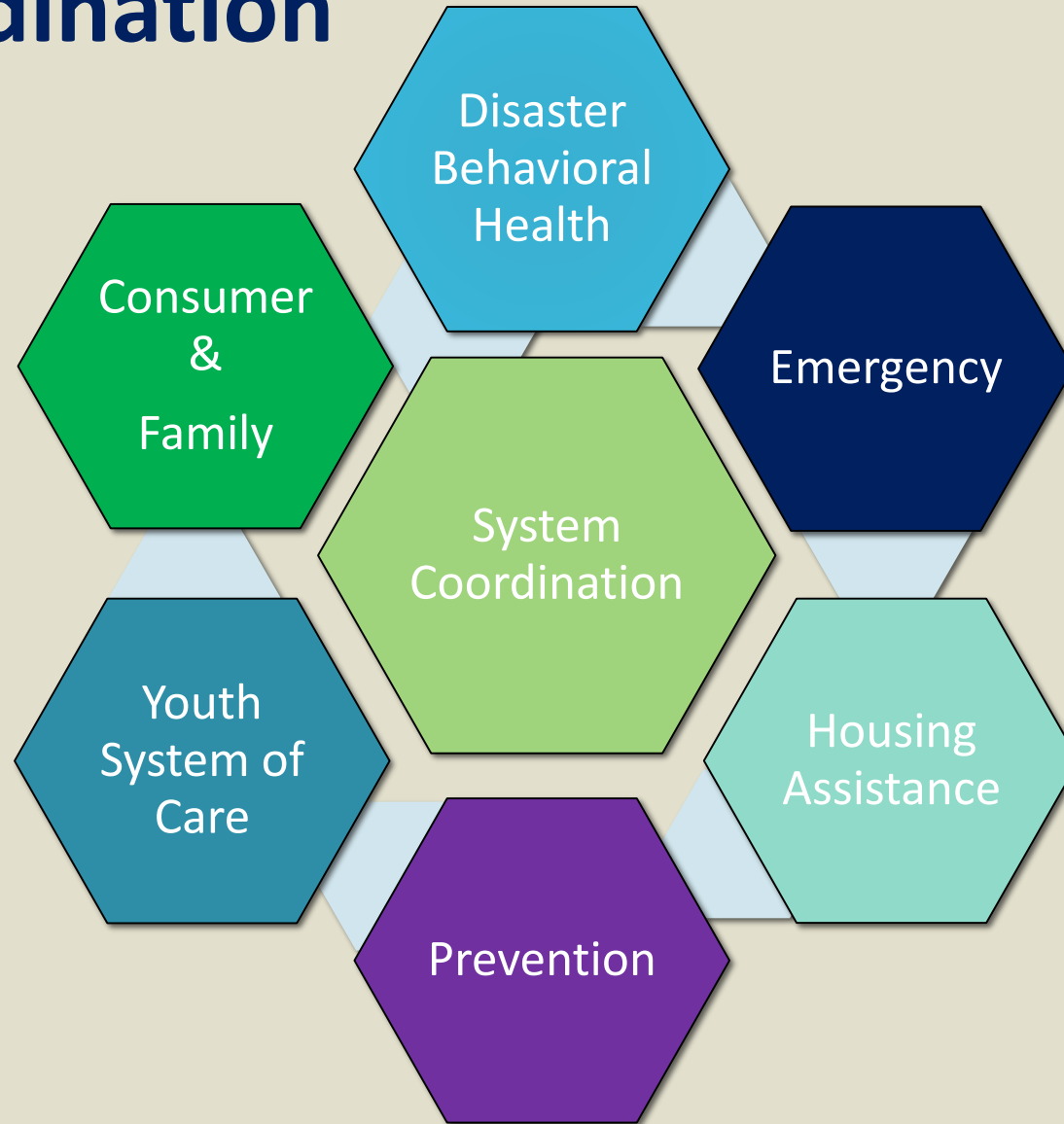
**6 Community Coalitions for Prevention Activities**



Region 3's nationally accredited programs:

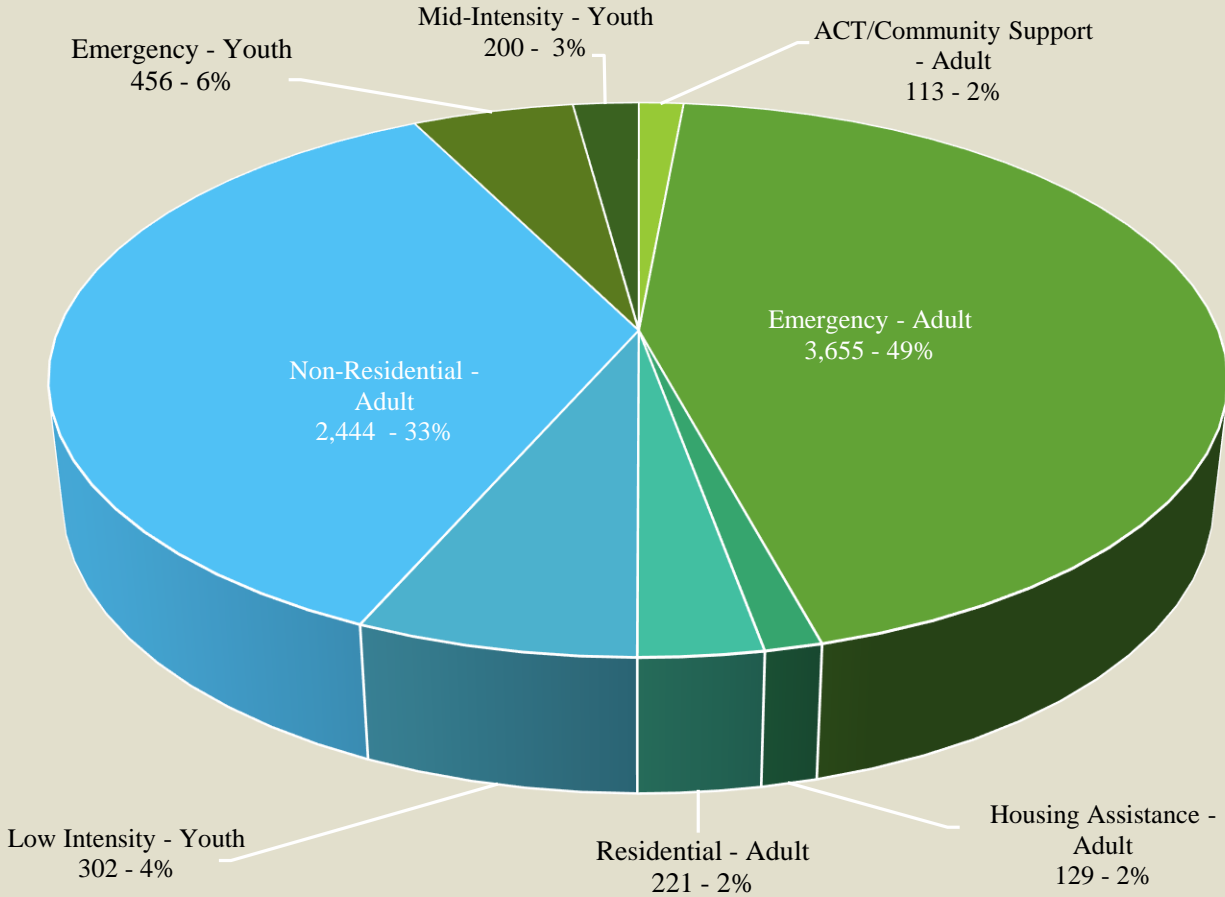
- Professional Partner Program
- Emergency Community Support
- Network

# System Coordination

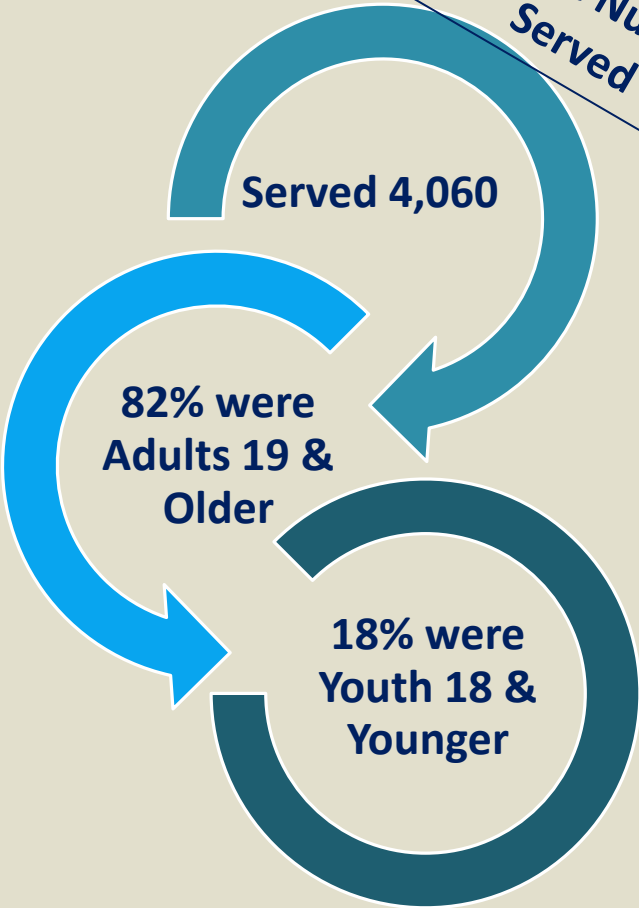


**Duplicated Count  
N=7,520**

**Individuals Served by Level of Care**



**Unique Number  
Served**



# Prevention System

Prevention Coalitions working to improve the health of Region 3 communities through

---


- Mental Health Promotion
- Substance Misuse/Use Prevention
- Suicide Prevention

**7,330 individuals directly served through Indicated, Selective and Universal Direct Prevention Strategies**

**\$731,473 expended which is 5% of total expenditures.**



Training	# Trained
<b><i>Mental Health First Aid (MHFA) &amp; Youth Mental Health First Aid (YMHFA)</i></b>	<b>318</b>
<b><i>Suicide Prevention</i></b> Question, Persuade, Refer (QPR) & Clinicians Trained in the Collaborative Assessment in Managing Suicidality (CAMS), Assessing and Managing Suicide Risk (AMSR) & Suicide Postvention	<b>451</b>
<b><i>Restorative Trauma Informed Care</i></b> Trauma 101 & Recovery, Healing & Recovery, Compassion Fatigue, Mindfulness, Calmer Classrooms, Trauma 2.0, Helping Adults Cope with Grief, Trauma and Children, Toxic Relationships: Raising Healthy Kids in an Unhealthy World, Rewiring the Anxious Brain, A New Perspective into Mental Health: including Anxiety, Depression and Anger, Building Hope & Resilience Through Trauma Informed Care, Wellness Recovery Action Plan (WRAP), Peer Support Ethics, and LEAP (Listen-Empathize-Agree-Partner)	<b>2,468</b>

 	
Targeted Response to Opioids	
Collected at Drug Take-Back Events	273 pounds
Safe Drug Disposal & Lock Boxes	1,840
School-Aged Youth Receiving Opioid Prevention Education	1,910

# Our Community Coalitions

---

Area Substance & Alcohol Abuse Prevention (ASAAP) (Adams, Clay, Nuckolls, Webster)

Buffalo County Tobacco Free Coalition

County Organization for Prevention & Education (COPE) (Hamilton)

Garfield-Loup-Wheeler (GLW) Children's Council

Grand Island Substance Abuse Prevention Coalition (Hall)

Meth & Addictions Prevention Strategies (MAPS) (Hall, Hamilton, Howard, Merrick)

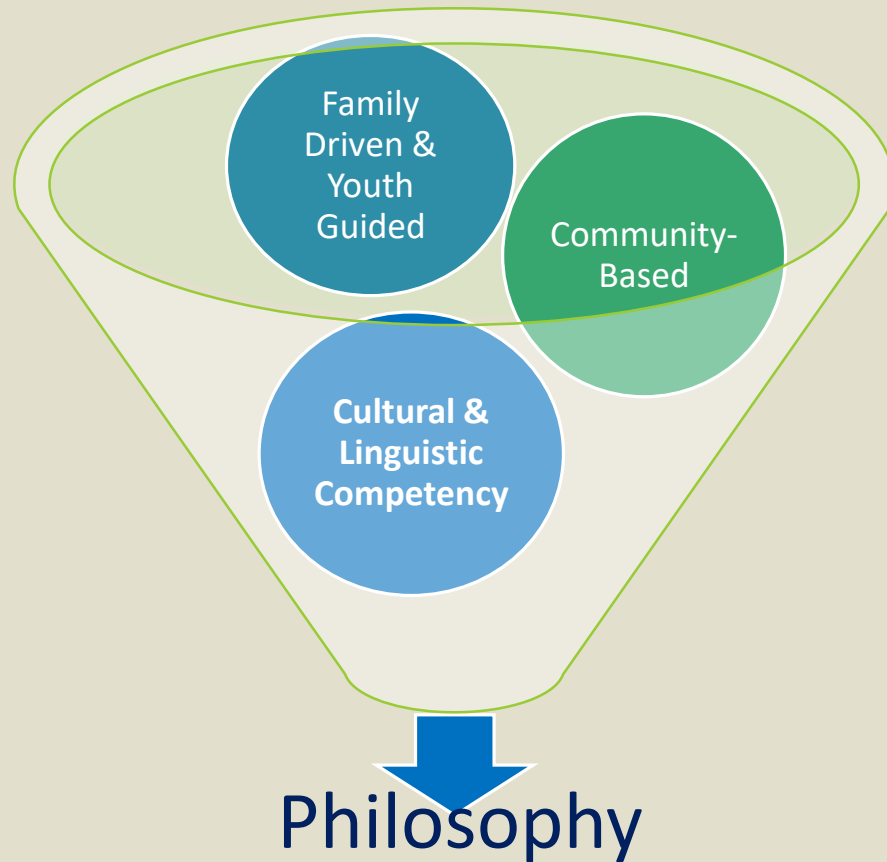
Positive Pressure Community Coalition (Buffalo County Community Partners)

Tobacco Free Hall County

UNK Alcohol Task Force Peer Health Education (University of Nebraska at Kearney)

*TA Support & Funded   TA Support Only*

# Youth System of Care



## Children's Services by Level of Care

Crisis Services	456	48%
Middle Intensity Services	200	20%
Lower Intensity Services	302	32%
Total	958	100.0%

# Participant and Family System Coordination

*A mentor is someone who allows you to see the hope inside yourself.*

❑ 80 individuals were served in contracted Peer Support services in Region 3.

❑ Peer Support providers include

❑ Families CARE

❑ South Central Behavioral Services

❑ Lutheran Family Services (*Vets4Vets*)



# Region 3 Emergency Psych System

## Array of Behavioral Health Services available within the Region 3 Emergency System

Acute Inpatient Youth & Adult	Emergency Community Support Youth & Adult	Co-Responder Youth & Adult
Crisis Stabilization (Voluntary)	Emergency Protective Custody (EPC) (18 & Older)	Medication Management Youth & Adult
Crisis Response Youth & Adult	Emergency Psych System Coordination	Urgent Outpatient/Assessment Youth & Adult
Crisis Triage Center Youth & Adult	Medically Supported Detox & Social Detox Adult	24 Hour Crisis Phone Youth & Adult

**4,111** individuals engaged with a Crisis Services

**456** (11%) of these individuals were age 18 or under. **3,655** (89%) were 19 and older.

# Housing Assistance Program

☐ **129** Served

☐ **102** Serious mental illness

☐ **11** Women exiting Therapeutic Community treatment

☐ **12** Transitional age youth

☐ **4** Substance use disorder recovery

☐ **\$9,046** average annual gross income  
of an individual receiving Housing Assistance



# Region 3 Network

---

**Behavioral Health Specialists**

**Families CARE**

**Friendship House**

**Goodwill Industries of Greater Nebraska**

**Live Well Counseling Center**

**Lutheran Family Services**

**Mary Lanning Healthcare/The Lanning Center**

**Mid-Plains Center for Behavioral Health Services**

## **Region 3 Network** (continued)

---

**Region 3 Behavioral Health Services**

**Richard Young Behavioral Health**

**St. Francis Alcohol and Drug Treatment Center**

**South Central Behavioral Services**

**The Bridge, Inc.**

**The Bridge Behavioral Health**

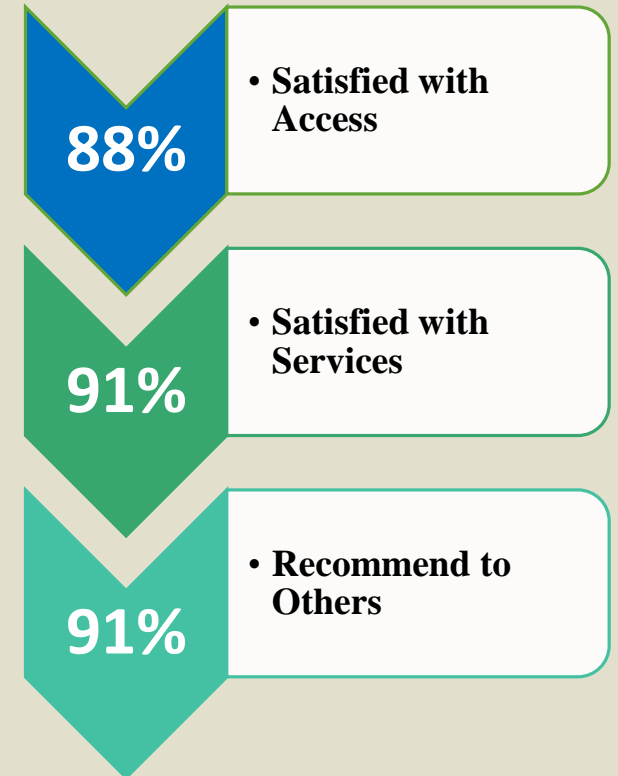
**The Lanning Center**

**The Well (Women's Empowering Life Line)**

# Region 3 Behavioral Health Services Network

## Access and Performance Outcomes

- 100% of individuals discharged from psychiatric hospitalization were offered a medication management appointment within 21 days.
- 97% of veterans participating in the Vets4Vets Program saw an increase in their overall functioning as measured by the DLA-20 Assessment.
- 93% of individuals served by the Co-Responder Program reported an increase in ability to resolve future crisis.
- 92% of individuals served by Supported Housing services were in stable living at the time of discharge.
- 92% of individuals served in Peer Support services achieved or partially achieved their goals.
- 84% of individuals served through the Region 3 Provider Network were in stable living at discharge.
- 79% of individuals meeting priority criteria were offered admission to Short-Term Residential within 30 days of referral.
- The Crisis Stabilization Unit served 1,199 individuals with 99% being diverted from an EPC and 85% diverted from a voluntary hospitalization.



# R3 Emergency Community Support

**144 individuals served**

**Average Age**  
**39.1 years**

**Prior Substance Use  
Treatment**  
**43.8%**

**Improvement on  
DLA-20 Assessment**  
**82.8%**

- **88.3% individuals achieved or partially achieved their goals**
- **85.5% of intakes completed within 7 days of referral**
- **95.1% reported they were satisfied with the services they received**

# Professional Partner Program

163 Youth &  
Young Adults  
Served

## Referral Sources

Human Service Provider 40%  
School 27.9%  
Family/Caregiver 13.6%

Gender  
Males 61.3%  
Females 38.7%

Average of  
28.7 point  
decrease in  
functional  
impairments.

ANY  
QUESTIONS?

THANK  
YOU!